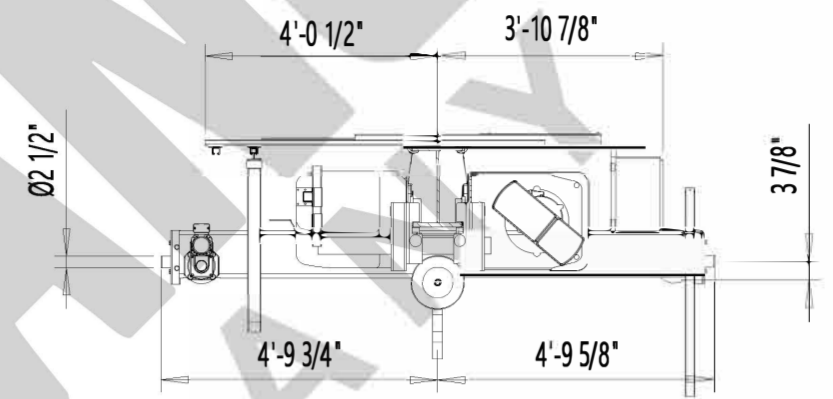
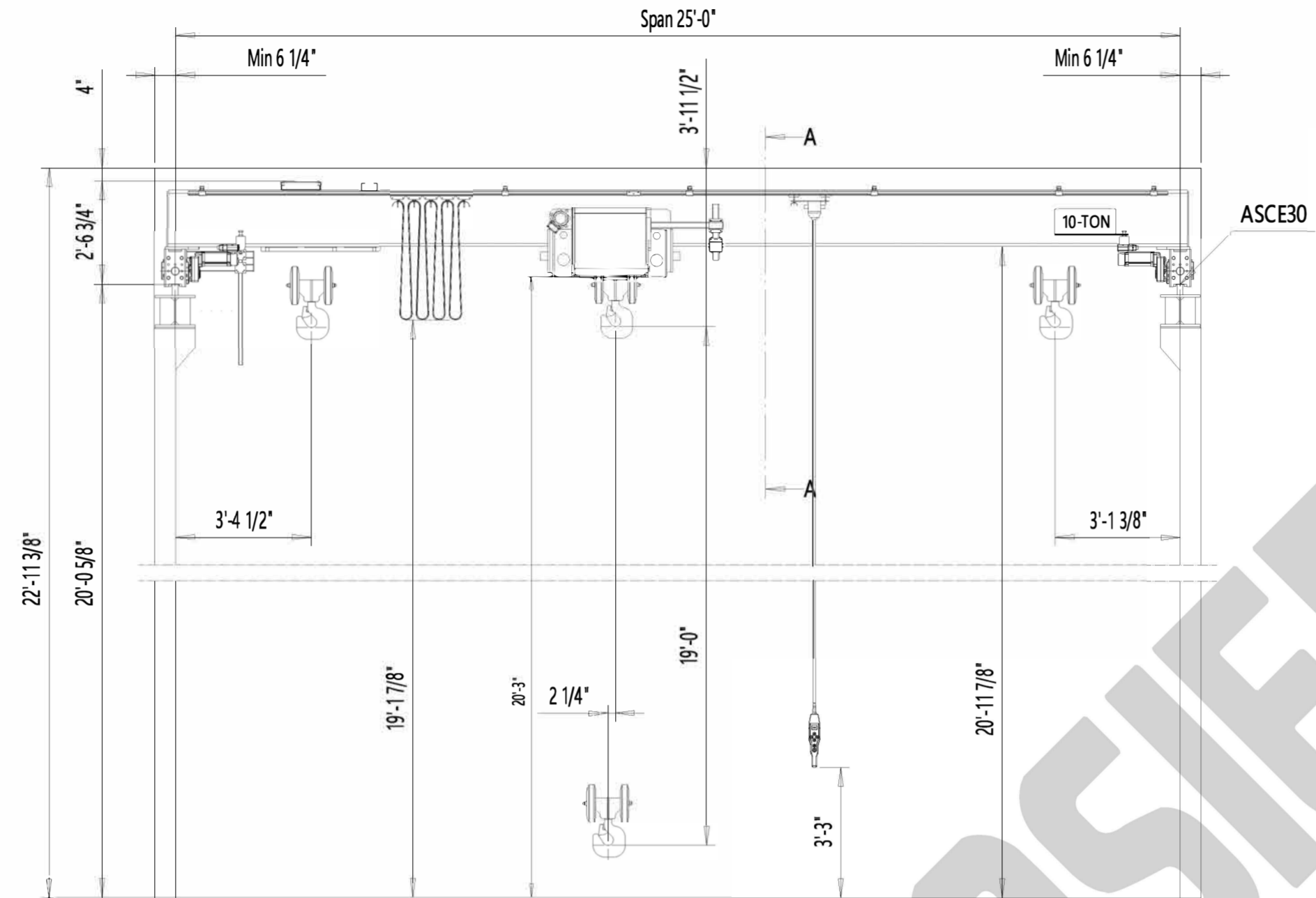


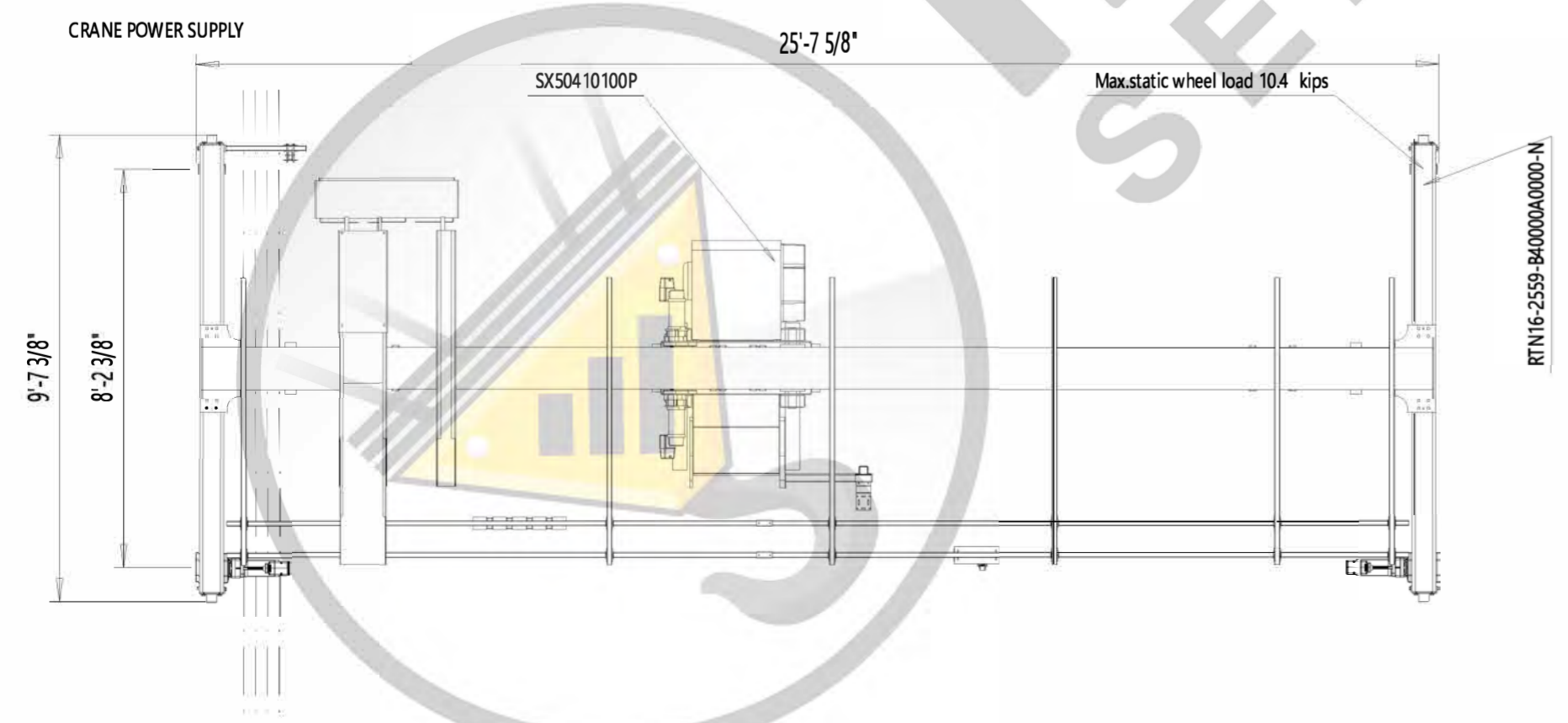
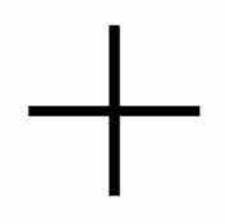
10tTRSGx25-O

REV	CHANGE DESCRIPTION	ECN	DATE	REVISED BY	APPROVED BY
-----	--------------------	-----	------	------------	-------------



View A-A

SPECIFY NORTH



TECHNICAL DATA

SPAN	: 25'-0"
LOAD	: 10-TON
LIFTING HEIGHT	: 19'-0"
HOISTING SPEED	: 20.0/3.2 ft/min 2-speed
TRAVERSING SPEED	: 65 ft/min stepless
TRAVELLING SPEED	: 100 ft/min stepless
WEIGHT OF TROLLEY	: 1440 lbs
WEIGHT OF BRIDGE	: 4011 lbs
CRANE CLASSIFICATION	: CMAA Class C
HOIST GROUP	: ISO M5/ Fem 2m
CRANE DRIVE GROUP	: CMAA C
MAIN / CONTROL VOLTAGE	: 460 / 115V; 60 Hz
SUPPLY POWER	: 17.03 Hp
LENGTH OF RUNWAY	: 0

SURFACE TREATMENT OF CRANE
 BRIDGE COLOR : Safety Yellow
 PAINT : AKRYL/127 µm

CUSTOMER ORGANIZES SAFE PLATFORM FOR CRANE SERVICE

Indoor Use crane

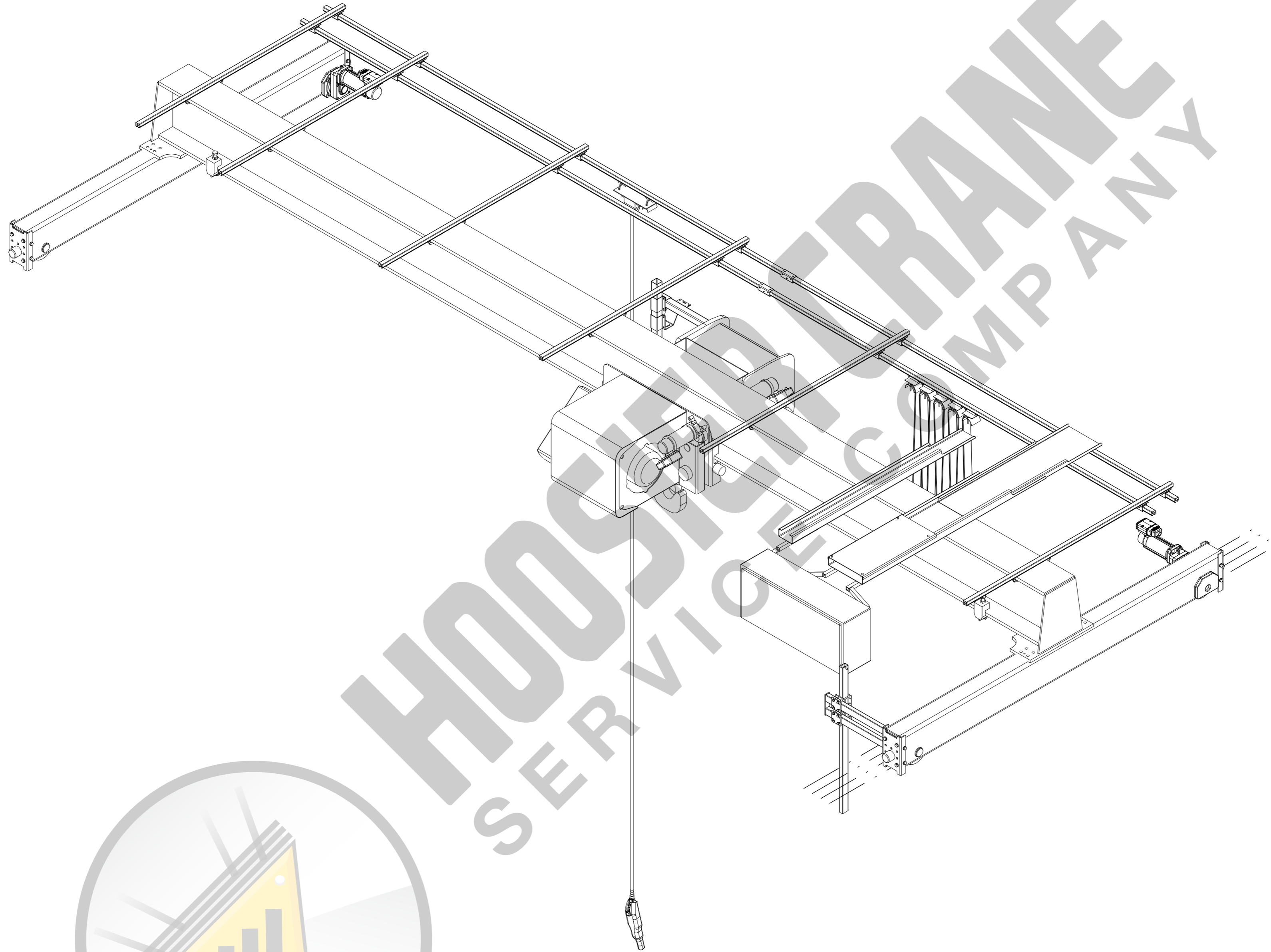


ACCEPTED BY:	Design	Date	Dept	DAS / 2.108.9 Vx proj
COMPANY:	QXSka 10-TON x 25ft Hol:19ft			
DATE:	10tTRSGx25-O			

This document is the absolute property of R&M. This document must not be copied without the written permission of R&M. The contents thereof must not be disclosed to a third party not be used for any unauthorized purpose. Contention will be prosecuted.

10tTRSGx25-O-I

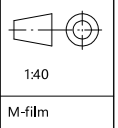
REV	CHANGE DESCRIPTION	ECN	DATE	REVISED BY	APPROVED BY



This document is the absolute property of R&M. This document must not be copied
 without the written permission of R&M.
 The contents thereof must not be disclosed to a third party nor be used for any unauthorized
 purpose. Contamination will be prosecuted.



Pos	Amount	Description	Specification			
ACCEPTED BY:			Design	Date	Dept	Vx proj
COMPANY:			QXska 10-TON x 25ft Ho: 19ft			
DATE:						
			10tTRSGx25-O-I			



1:40

M-film

Issue