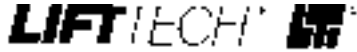


BUDGIT



LIFT-TECH INTERNATIONAL
Division of Columbus McKinnon
MUSKEGON, MICHIGAN 49443

INSTRUCTIONS AND PARTS LIST LOADPOINT CONTROL

1/8, 1/4 & 1/2 TONS

THE INFORMATION CONTAINED IN THIS MANUAL IS FOR INFORMATIONAL PURPOSES ONLY AND LIFT-TECH INTERNATIONAL, INC. DOES NOT WARRANT OR OTHERWISE GUARANTEE (IMPLIEDLY OR EXPRESSLY) ANYTHING OTHER THAN THE COMPONENTS THAT LIFT-TECH MANUFACTURES AND ASSUMES NO LEGAL RESPONSIBILITY (INCLUDING, BUT NOT LIMITED TO CONSEQUENTIAL DAMAGES) FOR INFORMATION CONTAINED IN THIS MANUAL.

GENERAL

These Loadpoint Controls are designed for use on **BUDGIT®** coil chain (.250" coil chain) electric hoists. These Loadpoint Controls come with rated loads of 1/8, 1/4 and 1/2 tons and coiled cord assemblies with extended lengths of 10', 15, and 20'. Rated loads are metric measure. These assemblies attach to existing attachment points and therefore require no reworking of existing hoist parts.



WARNING

This equipment is not suitable or designed to be used in conjunction with lifting or lowering persons

ASSEMBLY OF LOADPOINT TO HOIST



WARNING

Before performing any internal work on hoist, be certain power is shut off. Lock main service switch in the open position.

Before attaching Loadpoint Control to the existing hoist run Maintenance checks on the hoist, especially the coil chain.

Remove the existing lower block by driving out the small roll pin holding the lower block pin in the lower block yoke and then push the lower block pin out of the yoke to release the chain.

Refer to Figure 1. Place the bottom link of the hoist coil chain in the chain anchor of the Loadpoint Control (leaving the existing limit lever actuator in place) and put the pin (Ref. No. 9) thru both the anchor and the chain. Then put cotter pins (Ref. No. 8) thru the ends of the pin and spread the cotter pins to lock the connection in place.

Remove the Electrical Compartment Cover. Remove the screw (and save the screw) holding the push button and conductor cable assembly strain cable. Note markings

onwires. Disconnect conductor cable wires and remove push button and conductor cable assembly

Connect the new Loadpoint coil cord assembly by connecting wires to connections that have the same numbers. Connect the green wire, labeled **GND** (ground), to the spot that originally held the strain cable using the same screw. Fasten down tight to assure the ground. Place cord grip (Ref. No. 1) and lock in place with cord grip (Ref. No. 2). Squeeze this top cord grip (Ref. No. 2) tight to assure the coil cord will not slip.

Lubricate chain and hook as recommended in Section IV of the **BUDGIT MAN-GUARD** Electric Hoist Operation, Service & Parts Manual.

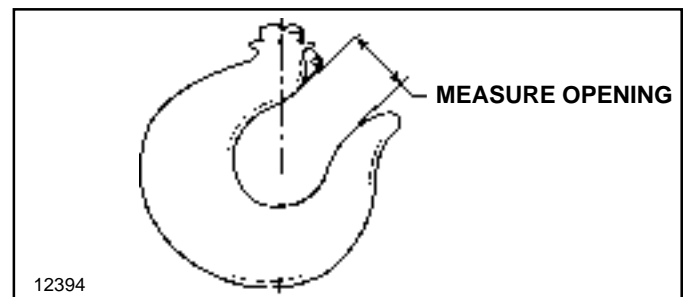
TESTING

After installing hoist make sure the hook goes up when the **UP** push button is depressed and down when the **DOWN** push button is depressed. **IF HOOK DIRECTION IS OPPOSITE TO PUSH BUTTON DIRECTION HOIST IS REVERSED PHASED AND MUST BE CORRECTED BY INTERCHANGING ANY TWO LEADS AT THE POWER SOURCE CONNECTION. DO NOT CHANGE INTERNAL WIRING OF HOIST.** Also assure that the limit stops are working properly.

The new configuration must be load tested. Follow the procedure outlined in Section VII of the **BUDGIT MAN-GUARD** Electric Hoist Operation, Service & Parts Manual.

MAINTENANCE

Maintenance is as described in Section V of the **BUDGIT MAN-GUARD** Electric Hoist Operation, Service & Parts Manual with the exception that the hook opening is as shown below.



HOIST RATED LOAD (TONS)	HOOK THROAT OPENING	
	NORMAL OPENING	REPLACE HOOK IF OPENING IS GREATER THAN
1/8, 1/4, 1/2	1-1/16	1-3/16

Lower Hook Opening

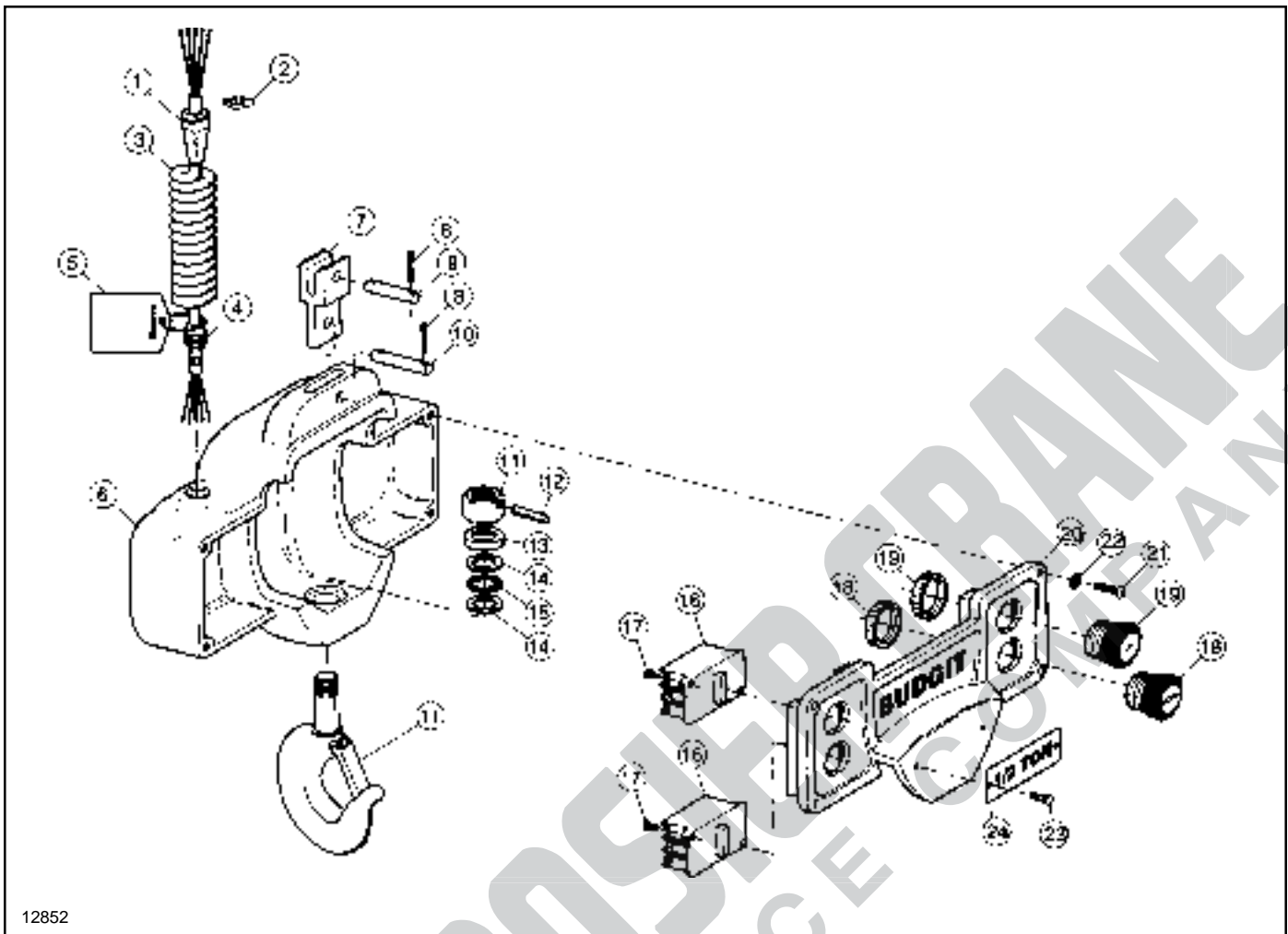


Figure 1. Loadpoint Control.

Ref. No.	Key Number	Description	Qty. Req'd
1		Loadpoint Lower Block Assembly (Includes Ref. Nos. 1 thru 24)	1
		1/8 Ton	
	BLC-101	10' Cord Length	
	BLC-102	15' Cord Length	
	BLC-103	20' Cord Length	
		1/4 Ton	
	BLC-104	10' Cord Length	
	BLC-105	15' Cord Length	
	BLC-106	20' Cord Length	
		1/2 Ton	
	BLC-107	10' Cord Length	
	BLC-108	15' Cord Length	
	BLC-109	20' Cord Length	
		Coil Cord Assembly (Includes Ref. Nos. 1 thru 4)	1
	BLC-110	10' Length	
	BLC-111	15' Length	
BLC-112	20' Length		
2	BLC-113	Cord Grip (.460 Dia.)	1
2	BLC-114	Cord Grip (.406 - .468 Dia.)	1

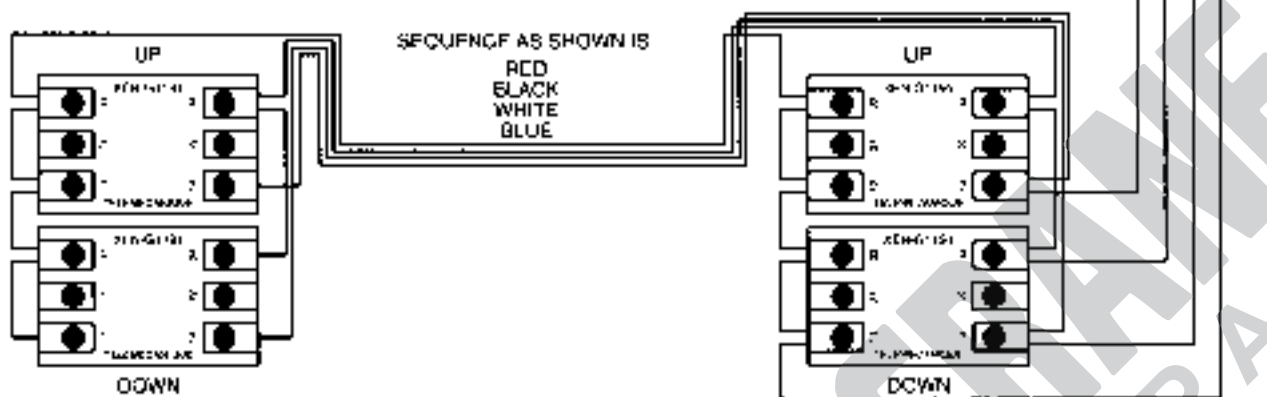
Figure 1. Loadpoint Control - Continued.

Ref. No.	Key Number	Description	Qty. Req'd
3		5C - #18 SJO Coil Cord	1
	BLC-115	For BLB-110, 10' Extended, 2' Retracted	
	BLC-116	For BLB-111, 15' Extended, 3' Retracted	
	BLC-117	For BLB-112, 20' Extended, 4' Retracted	
		Connections for Coil Cord (Not Shown)	
	BLC-118	Ring Terminal for #16-#22 Wire, #10 Screw	1
	BLC-119	Female Quick Connect, .25 Tab for #18 - #22	4
	BLC-120	Jumper Wire Assembly for Fast Speed	1
4	BLC-121	1/2" NPT Cord Grip (.270 - .480 Dia.)	1
5	BLC-122	Warning Tag Assembly	1
6	BLC-123	Lower Block Frame	1
7	BLC-124	Chain Anchor	1
8	BLC-125	Cotter Pins (1/8 x 1)	4
9	BLC-126	Pin (5/16 x 1-1/2)	1
10	BLC-127	Pin (5/16 x 1-3/4)	1
11	BLC-128	Hook and Nut Assembly	1
	*	Hook	1
	*	Round Nut	1
	BLC-129	Hook Latch Assembly	1
12	BLC-130	Grooved Pin (Type F, 3/16 x 1-1/4)	1
13	BLC-131	Bearing Shield	1
14	BLC-132	Thrust Bearing Washers	2
15	BLC-133	Needle Thrust Bearing	1
16	BLC-134	Contact Blocks	4
17	BLC-135	Slotted Round Head Screws (#4 - 40 x 1/2)	8
18	BLC-136	Pushbuttons (Down)	2
19	BLC-137	Pushbuttons (Up)	2
20	BLC-138	Lower Block Cover	1
21	BLC-139	Hex Socket Button Head Cap Screws (#8 - 32 x 5/8)	4
22	BLC-140	Spring Lockwashers (#8)	4
23	BLC-141	Round Head Drive Screws (#4 x 1/4)	2
24		Capacity Plate	1
	BLC-142	1/8 Ton	
	BLC-143	1/4 Ton	
	BLC-144	1/2 Ton	

* Hook and Nut not sold separately, only as an assembly.

Notes

NOTE: ALL WIRES TO BE #18 FLEXING TYPE MTW OR TFFN
OR GASOLINE & OIL RESISTANT FOR AWM
STRIP WIRES 3/8".



AS VIEWED FROM INSIDE HANDLE

229015

Contact Block and Jumper Assembly.

WARRANTY

WARRANTY AND LIMITATION OF REMEDY AND LIABILITY

A. Seller warrants that its products and parts, when shipped, and its work (including installation, construction and start-up), when performed, will meet applicable specifications, will be of good quality and will be free from defects in material and workmanship. All claims for defective products or parts under this warranty must be made in writing immediately upon discovery and, in any event, within one (1) year from shipment of the applicable item unless Seller specifically assumes installation, construction or start-up responsibility. All claims for defective products or parts when Seller specifically assumes installation, construction or start-up responsibility, and all claims for defective work must be made in writing immediately upon discovery and, in any event, within one (1) year from completion of the applicable work by Seller, provided; however, all claims for defective products and parts must be made in writing no later than eighteen (18) months after shipment. Defective items must be held for Seller's inspection and returned to the original f.o.b. point upon request. THE FOREGOING IS EXPRESSLY IN LIEU OF ALL OTHER WARRANTIES WHATSOEVER, EXPRESS, IMPLIED AND STATUTORY, INCLUDING, WITHOUT LIMITATION, THE IMPLIED WARRANTIES OF MERCHANTABILITY AND FITNESS.

B. Upon Buyer's submission of a claim as provided above and its substantiation, Seller shall at its option either (i) repair or replace its B. Upon Buyer's submission of a claim as provided above and its substantiation, Seller shall at its option either (i) repair or replace its product, part or work at either the original f.o.b. point of delivery or at Seller's authorized service station nearest Buyer or (ii) refund an equitable portion of the purchase price.

C. This warranty is contingent upon Buyer's proper maintenance and care of Seller's products, and does not extend to fair wear and tear. Seller reserves the right to void warranty in event of Buyer's use of inappropriate materials in the course of repair or maintenance, or if Seller's products have been dismantled prior to submission to Seller for warranty inspection.

D. The foregoing is Seller's only obligation and Buyer's exclusive remedy for breach of warranty, and is Buyer's exclusive remedy hereunder by way of breach of contract, tort, strict liability or otherwise. In no event shall Buyer be entitled to or Seller liable for incidental or consequential damages. Any action for breach of this agreement must be commenced within one (1) year after the cause of action has accrued.