

Disconnect power source from hoist. Lock disconnect in the off position and tag to prevent accidental application of power.

Disconnect motor and brake leads from the controls.

Remove brake and motor.

Remove contactor and install provided contactor (4-normally open).

Note: 3-normally open-1-normally closed contactor will not function properly

Install motor, pulling wire leads through the gear case wire passage.

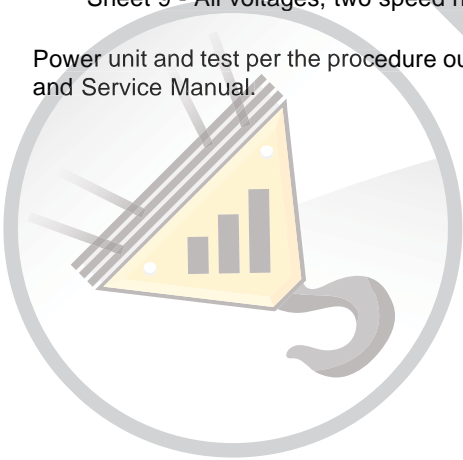
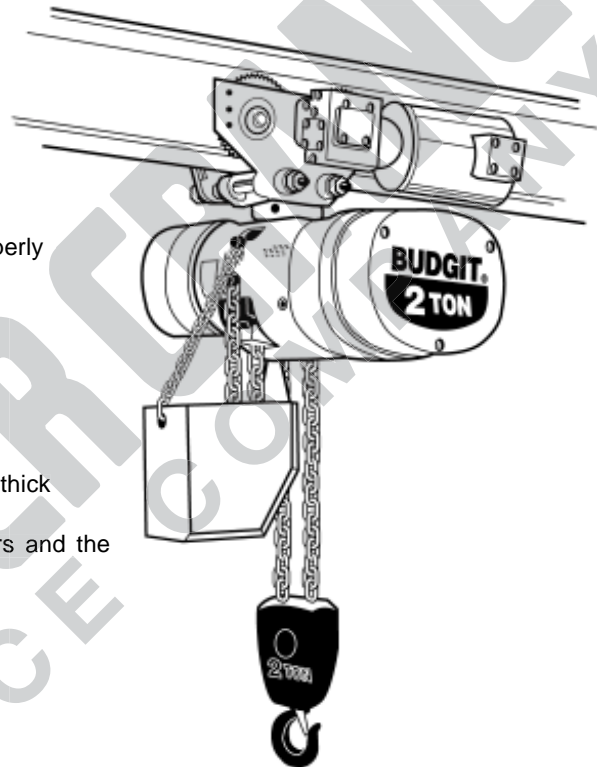
Install brake using provided hardware.

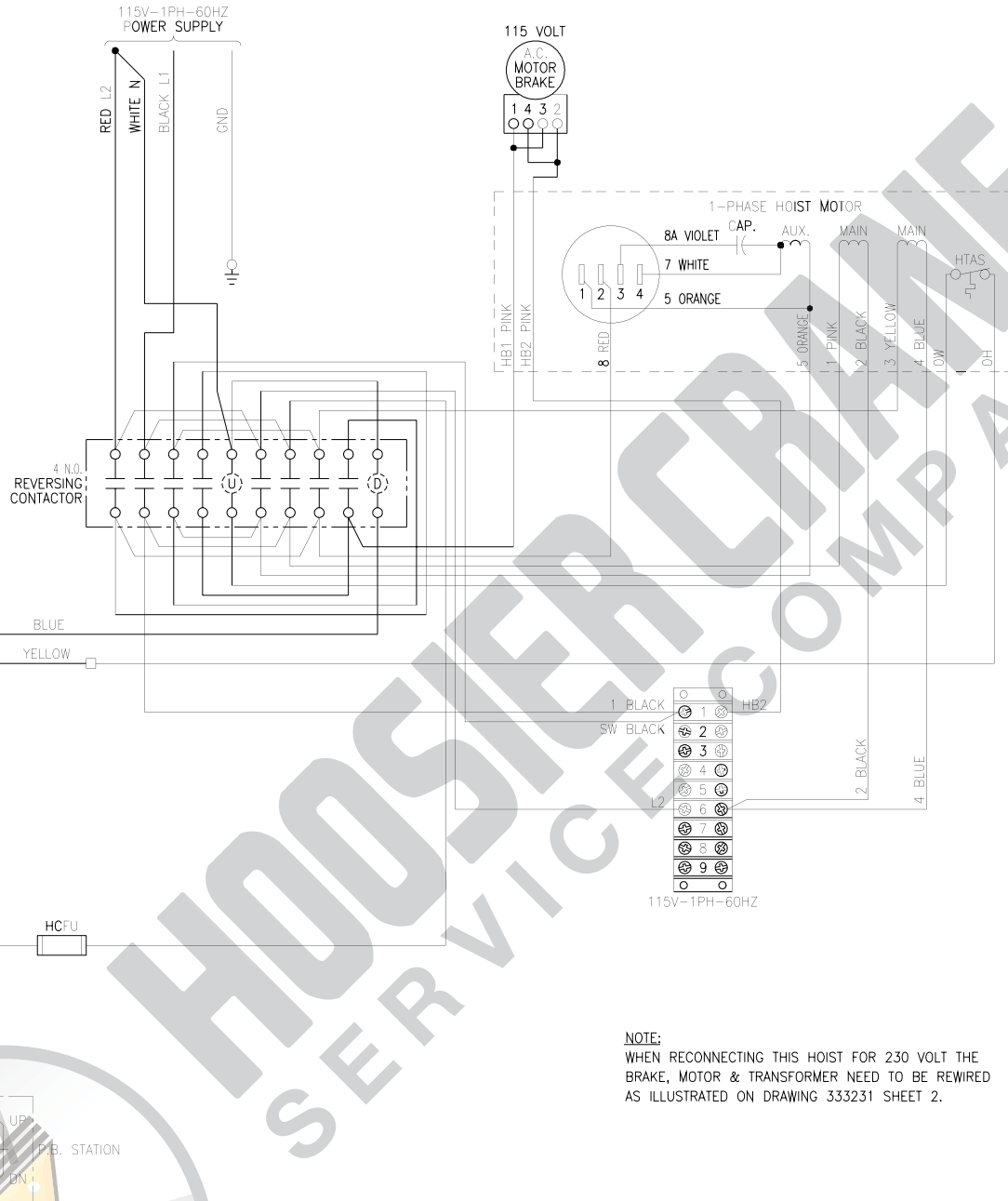
- (2) NO2112 - 3/8-16 x 1" Hex socket head cap screw
- (2) 10095703 - 3/8" Lock-washer, socket head cap screw
- (1) 10119413 - External retaining ring 0.625" outside diameter 0.035" thick

Wire the hoist using the provided (3) 22700310 - 7.5" black wire jumpers and the appropriate wiring diagram.

- Sheet 2 - 115V single phase without transformer
- Sheet 3 - 230V single phase without transformer
- Sheet 4 - 115V single phase with transformer
- Sheet 5 - 230V single phase with transformer
- Sheet 6 - 230V three phase, single speed hoist
- Sheet 7 - 460V three phase, single speed hoist
- Sheet 8 - 200V or 575V three phase, single speed hoist
- Sheet 9 - All voltages, two speed hoist

Power unit and test per the procedure outlined in section 7-12, of the Operation, Parts, and Service Manual.



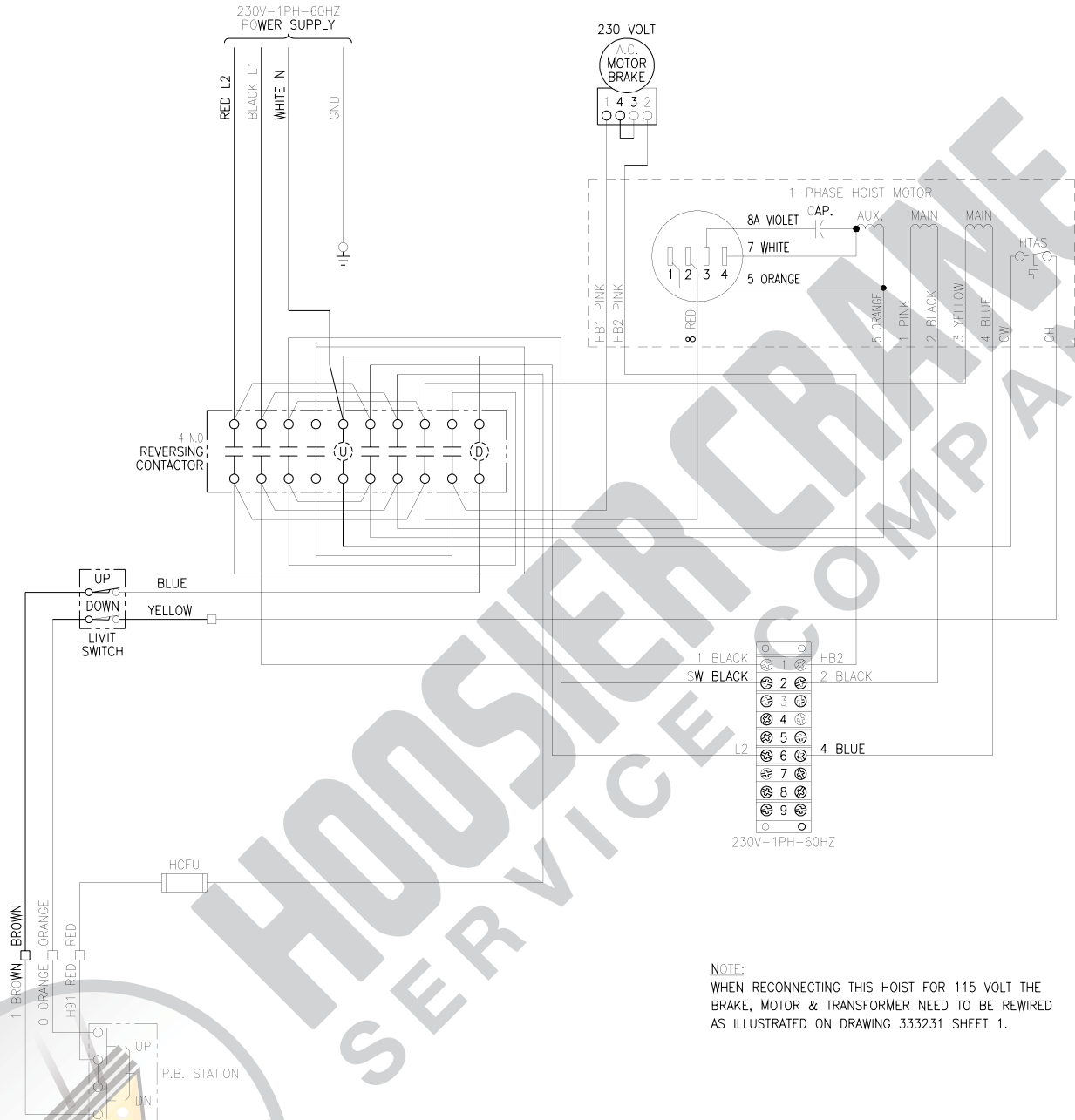


NOTE:
WHEN RECONNECTING THIS HOIST FOR 230 VOLT THE
BRAKE, MOTOR & TRANSFORMER NEED TO BE REWIRED
AS ILLUSTRATED ON DRAWING 333231 SHEET 2.

WARNING:
UNLESS HOOK RAISES WHEN "UP" BUTTON
IS PRESSED SEVERE HOIST DAMAGE AND A
DROPPED LOAD MAY RESULT.
CORRECT IMPROPER HOOK DIRECTION BY
INTERCHANGING MOTOR LEADS ORANGE (5)
AND RED (8).
DO NOT CHANGE PUSHBUTTON WIRING.

WARNING:
THIS EQUIPMENT MUST BE EFFECTIVELY
GROUNDED ACCORDING TO APPLICABLE
CODES.

AVERTISSEMENT:
CET EQUIPEMENT DOIT ETRE MIS A LA TERRE
EN ACCORDANCE AVEC LES NORMES EN
VIGUEUR.



WARNING:

UNLESS HOOK RAISES WHEN "UP" BUTTON IS PRESSED SEVERE HOIST DAMAGE AND A DROPPED LOAD MAY RESULT.

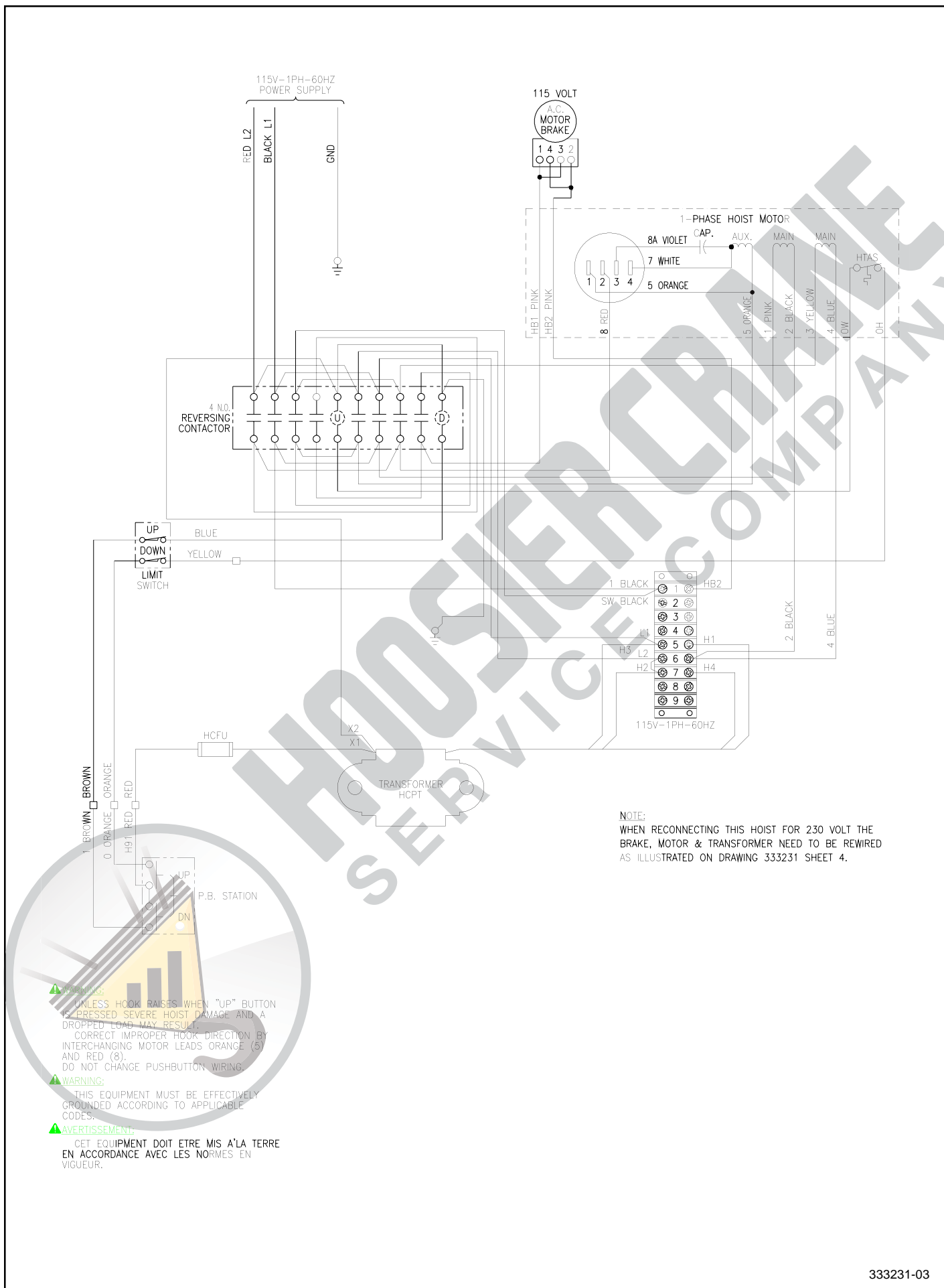
CORRECT IMPROPER HOOK DIRECTION BY INTERCHANGING MOTOR LEADS ORANGE (5) AND RED (8).
DO NOT CHANGE PUSHBUTTON WIRING.

WARNING:

THIS EQUIPMENT MUST BE EFFECTIVELY GROUNDED ACCORDING TO APPLICABLE CODES.

AVERTISSEMENT:

CET EQUIPEMENT DOIT ETRE MIS A LA TERRE EN ACCORDANCE AVEC LES NORMES EN VIGUEUR.



WARNING:

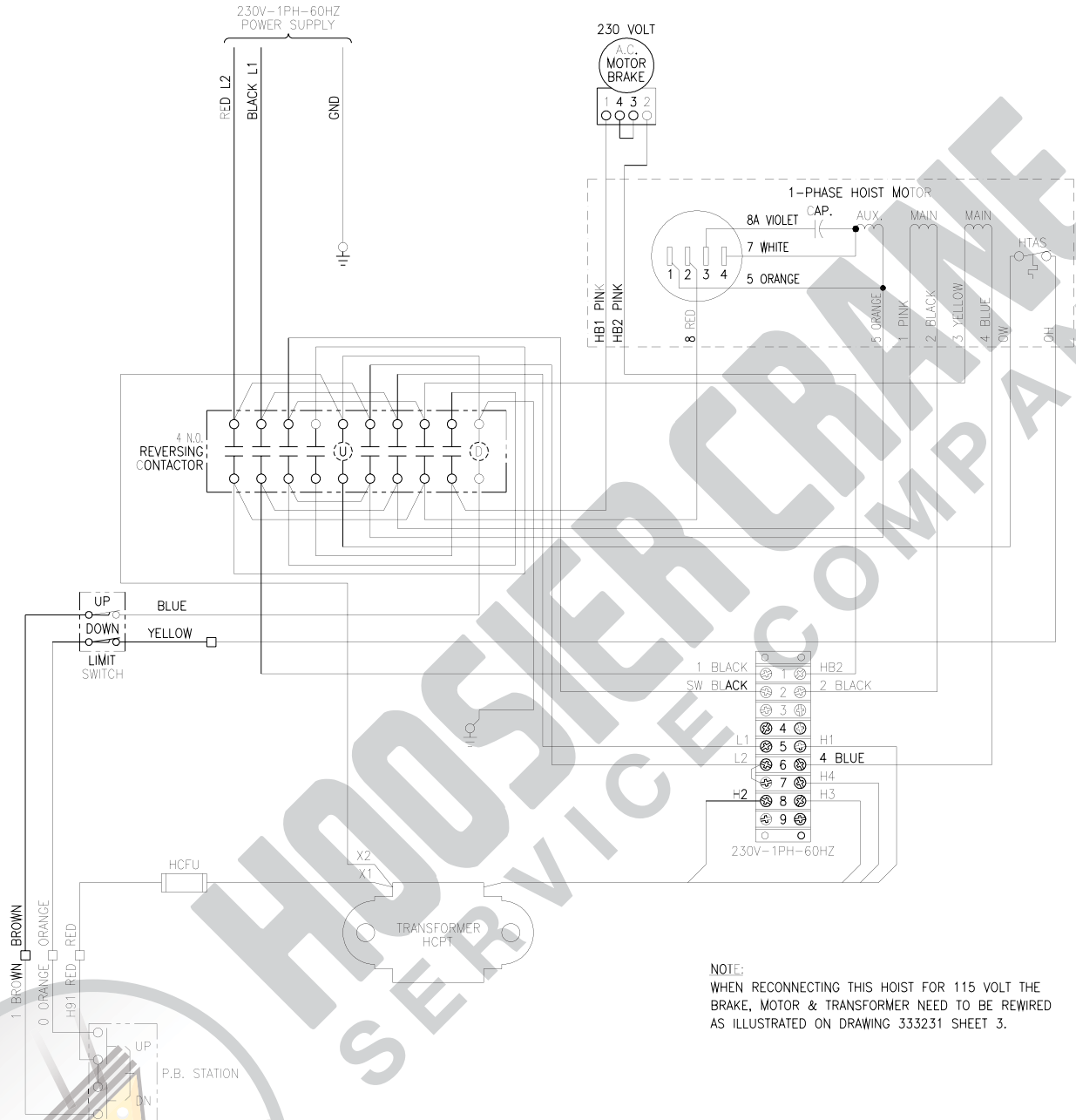
UNLESS HOOK RAISES WHEN "UP" BUTTON IS PRESSED SEVERE HOIST DAMAGE AND A DROPPED LOAD MAY RESULT.
CORRECT IMPROPER HOOK DIRECTION BY INTERCHANGING MOTOR LEADS ORANGE (5) AND RED (8).
DO NOT CHANGE PUSHBUTTON WIRING.

WARNING:

THIS EQUIPMENT MUST BE EFFECTIVELY GROUNDED ACCORDING TO APPLICABLE CODES.

AVERTISSEMENT:

CET EQUIPEMENT DOIT ETRE MIS A LA TERRE EN ACCORDANCE AVEC LES NORMES EN VIGUEUR.



NOTE:
WHEN RECONNECTING THIS HOIST FOR 115 VOLT THE
BRAKE, MOTOR & TRANSFORMER NEED TO BE REWIRED
AS ILLUSTRATED ON DRAWING 333231 SHEET 3.

WARNING:

UNLESS HOOK RAISES WHEN "UP" BUTTON
IS PRESSED SEVERE HOIST DAMAGE AND A
DROPPED LOAD MAY RESULT.

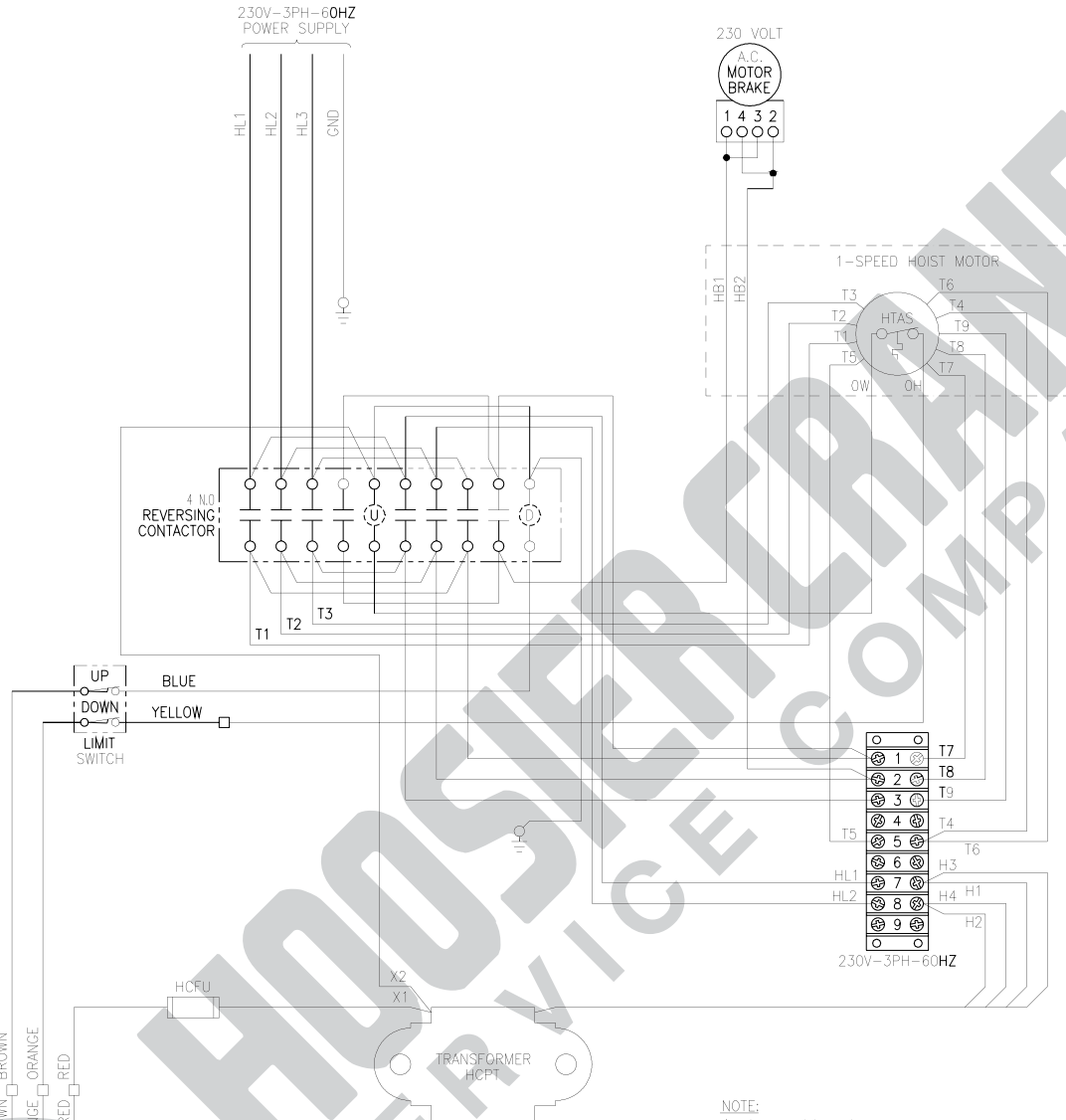
CORRECT IMPROPER HOOK DIRECTION BY
INTERCHANGING MOTOR LEADS ORANGE (5)
AND RED (8).
DO NOT CHANGE PUSHBUTTON WIRING.

WARNING:

THIS EQUIPMENT MUST BE EFFECTIVELY
GROUNDED ACCORDING TO APPLICABLE
CODES.

AVERTISSEMENT:

CET EQUIPEMENT DOIT ETRE MIS A LA TERRE
EN ACCORDANCE AVEC LES NORMES EN
VIGUEUR.

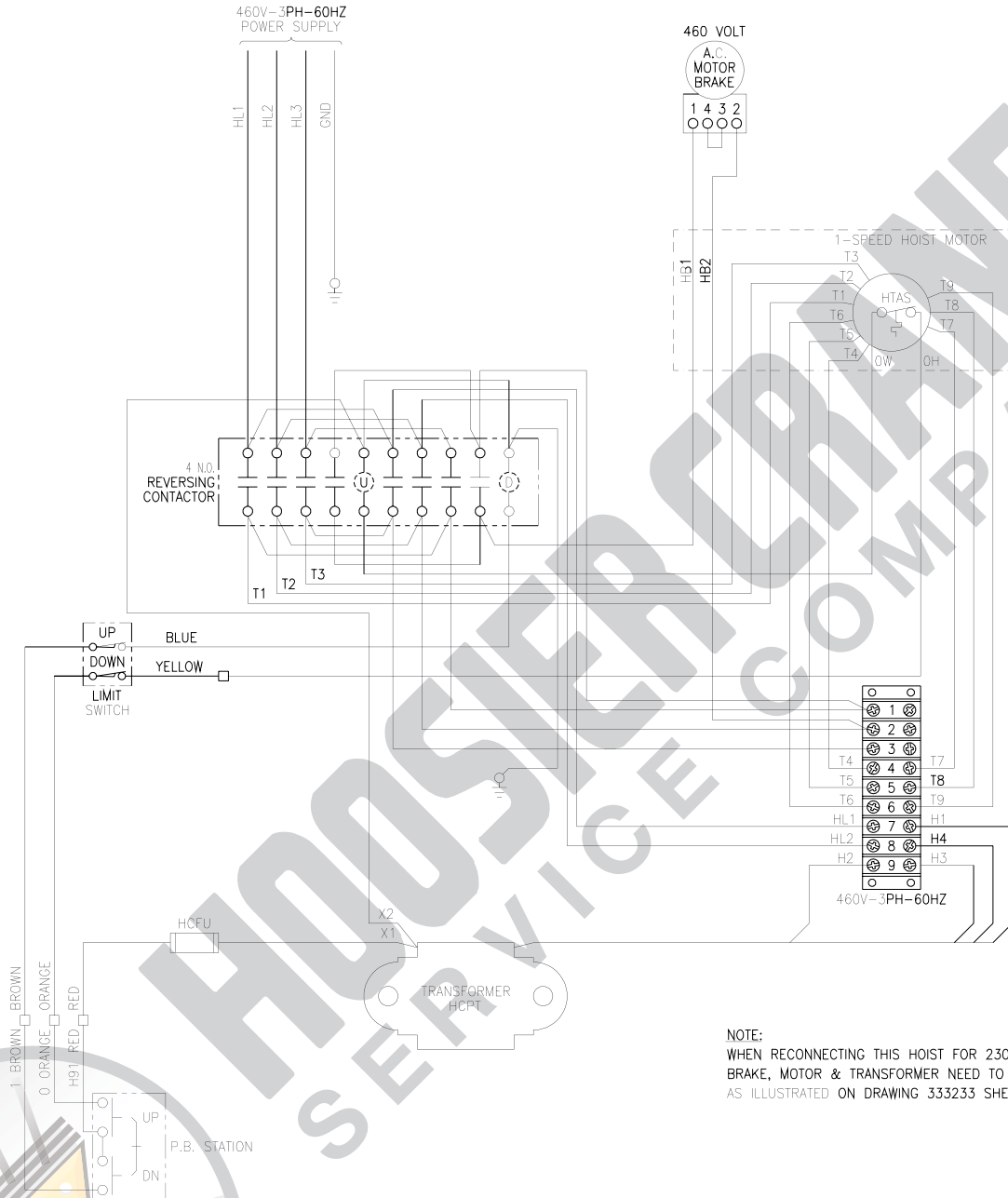


NOTE:
WHEN RECONNECTING THIS HOIST FOR 460 VOLT THE
BRAKE, MOTOR & TRANSFORMER NEED TO BE REWIRED
AS ILLUSTRATED ON DRAWING 333233 SHEET 2.

WARNING:
UNLESS HOOK RAISES WHEN "UP" BUTTON
IS PRESSED SEVERE HOIST DAMAGE AND A
DROPPED LOAD MAY RESULT.
CORRECT IMPROPER HOOK DIRECTION BY
INTERCHANGING INPUT POWER L1 AND L3
DO NOT CHANGE PUSHBUTTON WIRING.

WARNING:
THIS EQUIPMENT MUST BE EFFECTIVELY
GROUNDED ACCORDING TO APPLICABLE
CODES.

AVERTISSEMENT:
CET EQUIPEMENT DOIT ETRE MIS A LA TERRE
EN ACCORDANCE AVEC LES NORMES EN
VIGUEUR.



NOTE:
WHEN RECONNECTING THIS HOIST FOR 230 VOLT THE
BRAKE, MOTOR & TRANSFORMER NEED TO BE REWIRED
AS ILLUSTRATED ON DRAWING 333233 SHEET 1

WARNING:

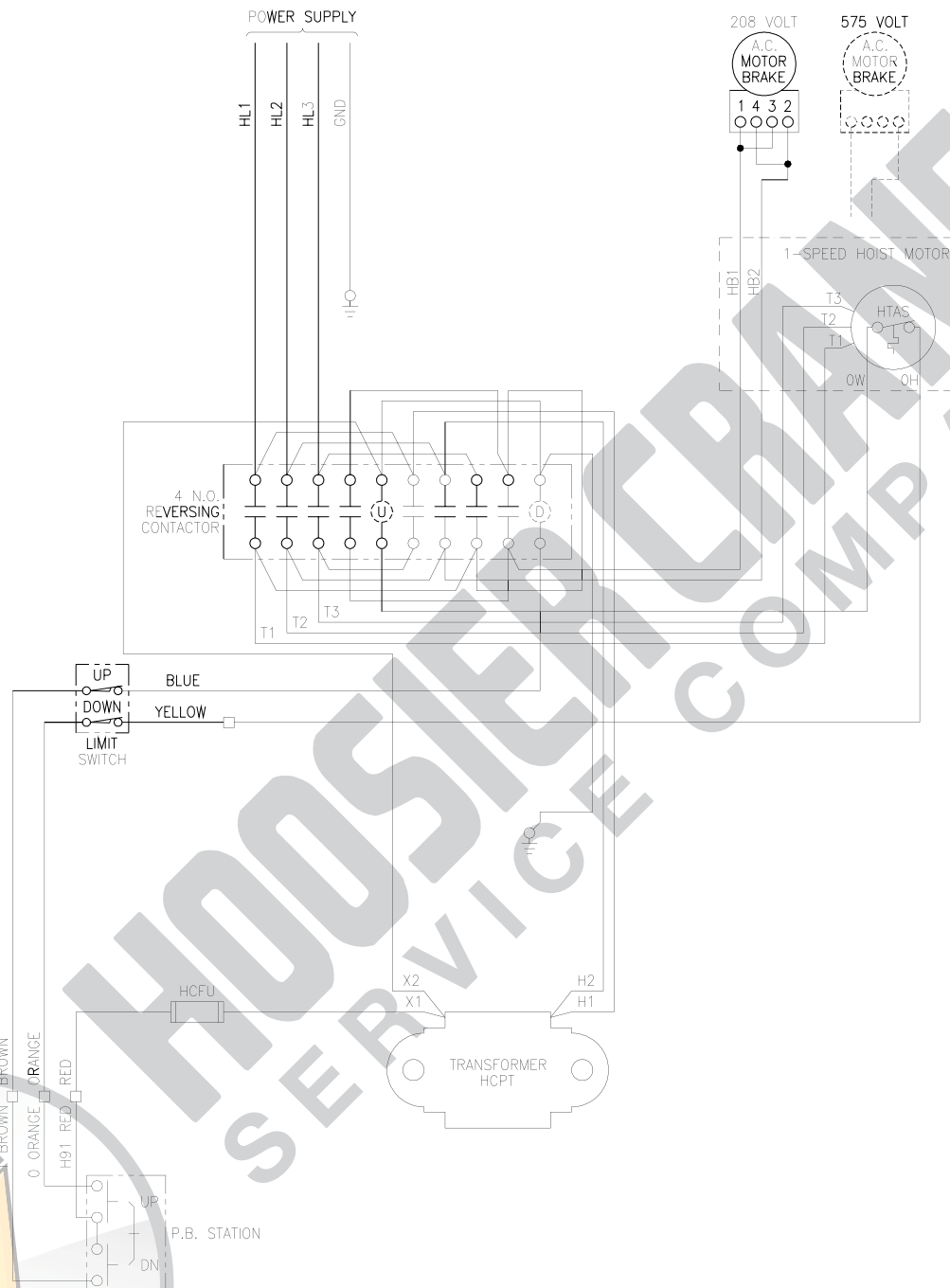
UNLESS HOOK RAISES WHEN "UP" BUTTON IS PRESSED SEVERE HOIST DAMAGE AND A DROPPED LOAD MAY RESULT. CORRECT IMPROPER HOOK DIRECTION BY INTERCHANGING INPUT POWER L1 AND L3 DO NOT CHANGE PUSHBUTTON WIRING.

WARNING:

THIS EQUIPMENT MUST BE EFFECTIVELY GROUNDED ACCORDING TO APPLICABLE CODES.

AVERTISSEMENT:

CET EQUIPEMENT DOIT ETRE MIS A LA TERRE EN ACCORDANCE AVEC LES NORMES EN VIGUEUR.



WARNING:

UNLESS HOOK RAISES WHEN "UP" BUTTON IS PRESSED SEVERE HOIST DAMAGE AND A DROPPED LOAD MAY RESULT.

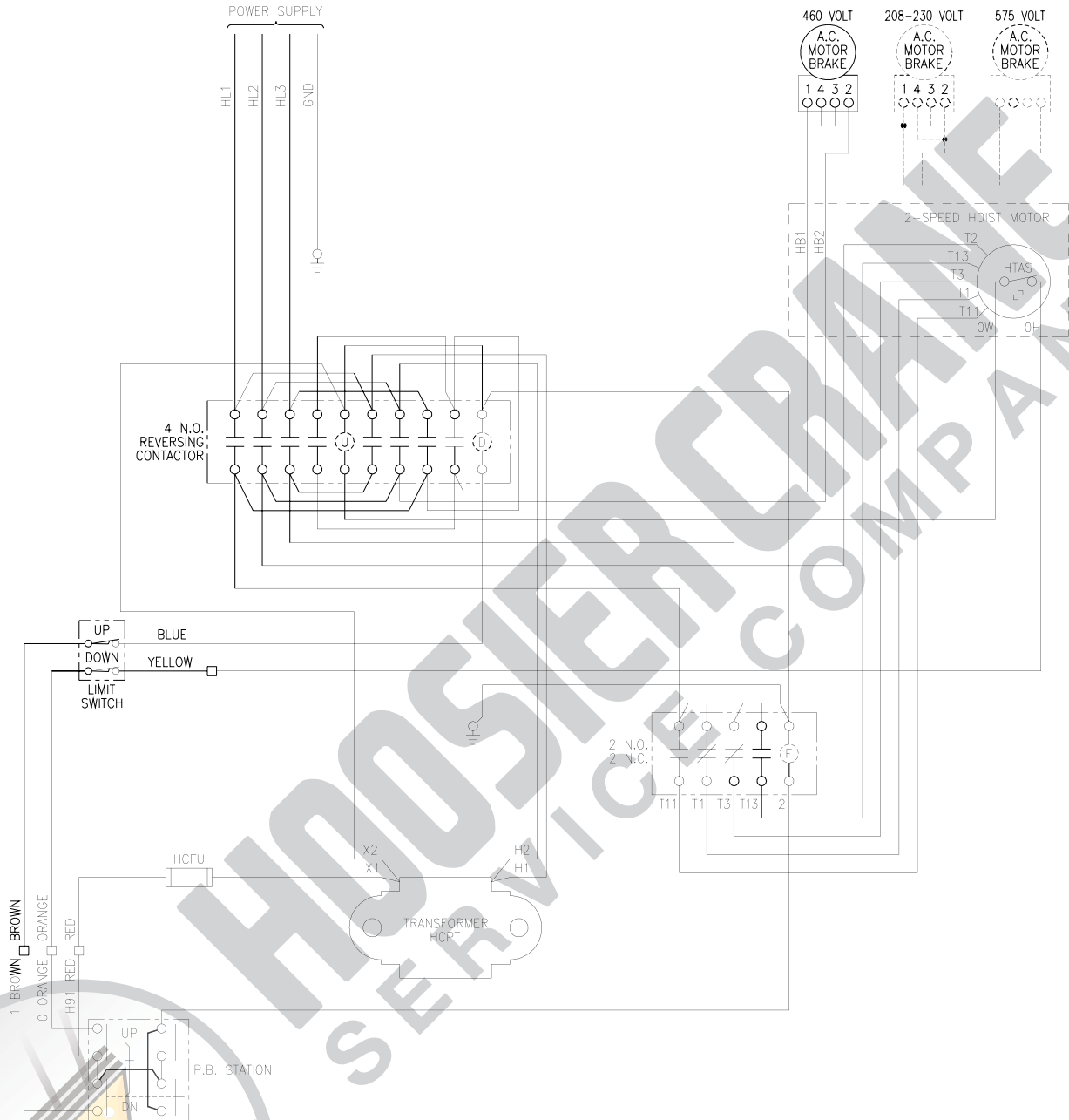
CORRECT IMPROPER HOOK DIRECTION BY INTERCHANGING INPUT POWER L1 AND L3 DO NOT CHANGE PUSHBUTTON WIRING.

WARNING:

THIS EQUIPMENT MUST BE EFFECTIVELY GROUNDED ACCORDING TO APPLICABLE CODES.

AVERTISSEMENT:

CET EQUIPEMENT DOIT ETRE MIS A LA TERRE EN ACCORDANCE AVEC LES NORMES EN VIGUEUR.



WARNING:

UNLESS HOOK RAISES WHEN "UP" BUTTON IS PRESSED SEVERE HOIST DAMAGE AND A DROPPED LOAD MAY RESULT.

CORRECT IMPROPER HOOK DIRECTION BY INTERCHANGING INPUT POWER L1 AND L3. DO NOT CHANGE PUSHBUTTON WIRING.

WARNING:

THIS EQUIPMENT MUST BE EFFECTIVELY GROUNDED ACCORDING TO APPLICABLE CODES.

AVERTISSEMENT:

CET EQUIPEMENT DOIT ETRE MIS A LA TERRE EN ACCORDANCE AVEC LES NORMES EN VIGUEUR.

NOTES



HOOSIER CRANE
SERVICE COMPANY

NOTES



HOOSIER CRANE
SERVICE COMPANY

HOOSIER CRANE SERVICE COMPANY



BUDGIT[®]

414 West Broadway Ave.
P.O. Box 769
Muskegon, Michigan 49443-0769
(800) 955-5541
(800) 742-9270 FAX