

## PLAIN & GEARED TROLLEYS 1/2 - 10 TONS

### NOTICE

It is the responsibility of the owner/user to install, inspect, test, maintain, and operate these trolleys in accordance with any applicable national and local codes and standards.

These general instructions deal with the normal installation, operation and maintenance situations encountered with the trolleys described herein. The instructions should not be interpreted to anticipate every possible contingency or to anticipate the final system or configuration that uses these trolleys. Read and observe the instructions stated in the manual furnished with equipment to be used with these trolleys.

These instructions include information for a variety of trolleys. Therefore, all instructions and information may not apply to one specific trolley. Disregard those portions of the instructions that do not apply.

If the trolley owner/user requires additional information, or if any information in these instructions is not clear, contact Acco Material Handling Solutions, York, Pennsylvania or the distributor of the trolley. Do not install, inspect, test, maintain, or operate this trolley unless this information is fully understood.

### ⚠ WARNING

This trolley should not be installed, operated, or maintained by any person who has not read all the contents of these instructions. Failure to read and comply with these instructions or any of the warnings or limitations noted herein can result in serious bodily injury or death, and/or property damage.

Only trained and qualified personnel shall operate and maintain this equipment.

Equipment described herein is not designed for, and should not be used for lifting, supporting, or transporting humans.

User should not use this trolley in conjunction with other equipment unless necessary and/or required safety devices applicable to the system are installed by the user.

Modifications to upgrade, rerate or otherwise alter these trolleys shall be authorized only by the original equipment manufacturer or qualified professional engineer.

### PRIOR TO INSTALLATION

1. Check for damage during shipment. Place claim with carrier if any damage is discovered. DO NOT install or use a damaged trolley.
2. Check runway beam that trolley will be installed upon.
  - a. Be sure runway beam is level, clean, straight, and free of foreign objects.
  - b. Be sure that trolley stops have been installed on both ends of runway beam to prevent trolley from running off end of beam. DO NOT install or operate trolley on a runway beam that does not have trolley end stops.

### INSTALLATION

Trolley is packaged disassembled as follows:

- Two (2) side plate assemblies;
- One (1) center suspension plate; and
- One (1) trolley pin that includes one (1) fixing bolt, sixteen (16) adjusting washers, two (2) rings, one (1) side washer, and one (1) locknut.

1. Assemble the trolley pin (T08) to the bracket (T07) on one of the trolley side plate assemblies. Fasten the trolley to the bracket using fixing bolt (T13).
2. Position adjusting washers (T14), rings (T15), and center suspension plate (T09) on trolley pin for beam flange width as shown in Table 1. Based on trolley capacity and beam flange width, position adjusting washers as per figures A through I.
3. Position other side plate assembly on trolley pin. Position any remaining adjusting washers (T14) and side washer (T12) on trolley pin. Tighten locknut (T11) against side washer (T12) on trolley pin.

Center suspension plate (T09) must be positioned in center of side plate assemblies and directly under the center of the beam. Recommended clearance between toe of beam and wheel flange is 1/16 inch. Maximum clearance should not exceed 1/8 inch.

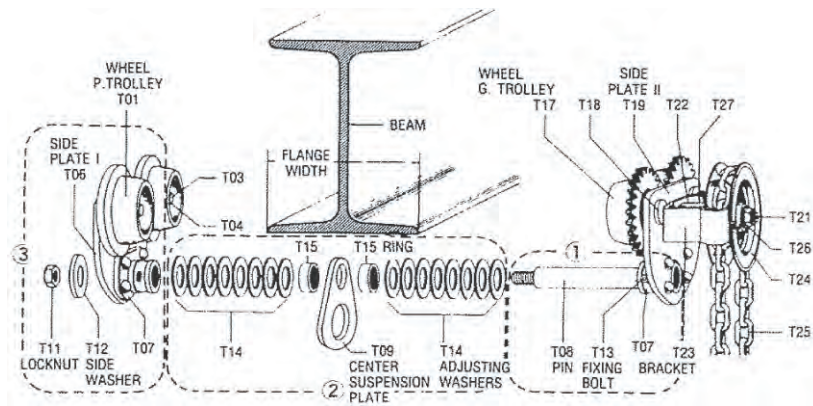
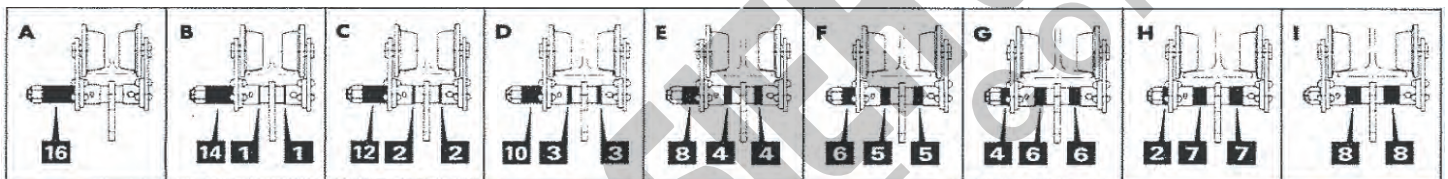


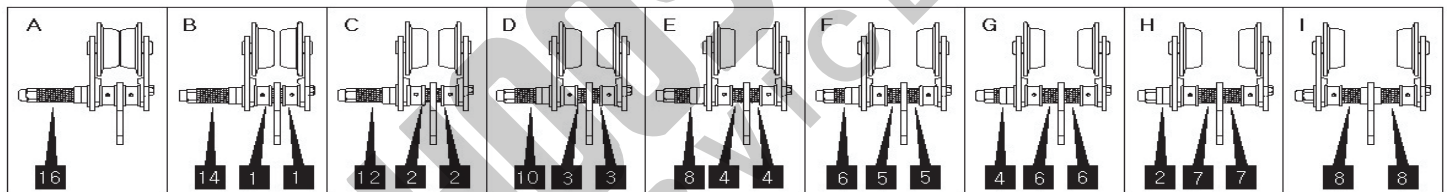
TABLE 1  
DISTRIBUTION OF ADJUSTING WASHERS  
PER BEAM FLANGE WIDTH  
AND TROLLEY CAPACITY TONS.

TROLLEY CAPACITY TONS	FIG. A MIN	FIG. B	FIG. C	FIG. D	FIG. E	FIG. F	FIG. G	FIG. H	FIG. I MAX
1/2	3.00	3.25	3.50	3.75	4.00	4.25	4.50	4.75	5.00
1	3.00	3.25	3.50	3.75	4.00	4.25	4.50	4.75	5.00
2	4.00	4.25	4.50	4.75	5.00	5.25	5.50	5.75	6.00
3	4.00	4.25	4.50	4.75	5.00	5.25	5.50	5.75	6.00
5	5.00	5.25	5.50	5.75	6.00	6.25	6.50	6.65	7.00
10	4.00	4.25	4.50	4.75	5.00	5.25	5.50	5.75	8.50

\* 1 ~ 5 TON \*



\* 10 TON \*



## OPERATION

1. DO NOT overload trolley.
2. DO NOT move loads over people.
3. DO NOT operate with excessive wheel-to-beam flange clearance.
4. AVOID side-pulling or side-loading. Trolley must remain seated and equalized with all wheels on beam flange surface.
5. KEEP runway beam flange surface free of foreign objects.
6. AVOID collisions with other trolleys and end stops.
7. MINIMIZE impact at trolley end stops by approaching end stop slowly.
8. DO NOT operate on runway beam if end stops are not present.
9. DO NOT use trolley to transport humans.
10. PLACE stops on runway to prevent trolley movement or travel prior to performing maintenance on trolley or hoist suspended from trolley.

## INSPECTION

1. Check locknut for tightness.
2. Check wheels for distortion, corrosion, cracks, and wear.
3. Check wheel bearings for excessive wear by rotating and rocking wheels.
4. Replace parts or entire trolley as required.

## NOTICE

TO ORDER PARTS : Provide product name, trolley capacity, part number, part description, and quantity required.



Acco Material Handling Solutions, LLC

76 Acco Drive, Box 792, York, PA 17405-0792  
717-741-4863 800-967-7333 FAX 717-741-8572  
Email : info@accomhs.com  
www. accomhs.com