

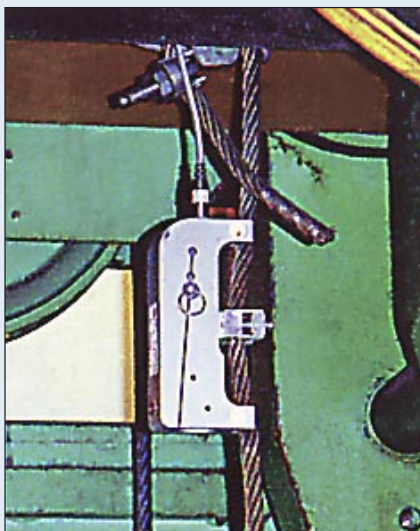
# **dynasafe**<sup>®</sup>

**UNIVERSAL load limiter  
HF 32 series**



- adapted for use on all wire ropes from 5 to 26 mm
- capacities from 250 to 6000 kg

- trip point power: 220 Vac/4 A
- manufactured in accordance with CE standards



**SIMPLE  
FITTING  
AND  
ADJUSTMENT**



# dynasafe

## "UNIVERSAL" load limiter HF 32 series

The new DYNASAFE load limiter, the model UNIVERSAL, is a mechanical device that has been designed particularly for fitting to existing overhead cranes and hoists with a dead end wire rope and connecting directly into the UP function of the lifting system.

It is a simple device with a switch to allow for certain dynamic effects, and which, when correctly adjusted, will prevent an overload condition of the lifting system.

### Application:

This mechanical load cell has been designed to provide a trip point for lifting systems which have a dead end wire rope. The trip point provides a signal that the user may employ depending on his requirements, e.g.:

- for load limiting in lifting systems
- to limit the speed as a function of the load on traversing
- to limit the effort applied for pulling.

This **UNIVERSAL load cell** is recommended for its simplicity and quick-fitting capability.

### Operating principle:

The load cell operates by the movement of metal within its elastic limits. This movement acts on an adjustable switch giving an "all-or-nothing" signal. The position of the adjustable pin sets the capacity range. The central "UNIVERSAL" fixing bracket is adapted to suit wire ropes from 5 mm to 16 mm (model HF 32/1) and from 17 to 26 mm (model HF 32/2).

Full details may be found in the installation manual.

The effort applied through the wire rope "deforms" the body of the load cell, and depending on the position of the adjustable pin to set the capacity range, gives a difference in the relative positions of the two sections operating a microswitch which may be wired directly into the UP function of the lifting system to prevent an overload condition.

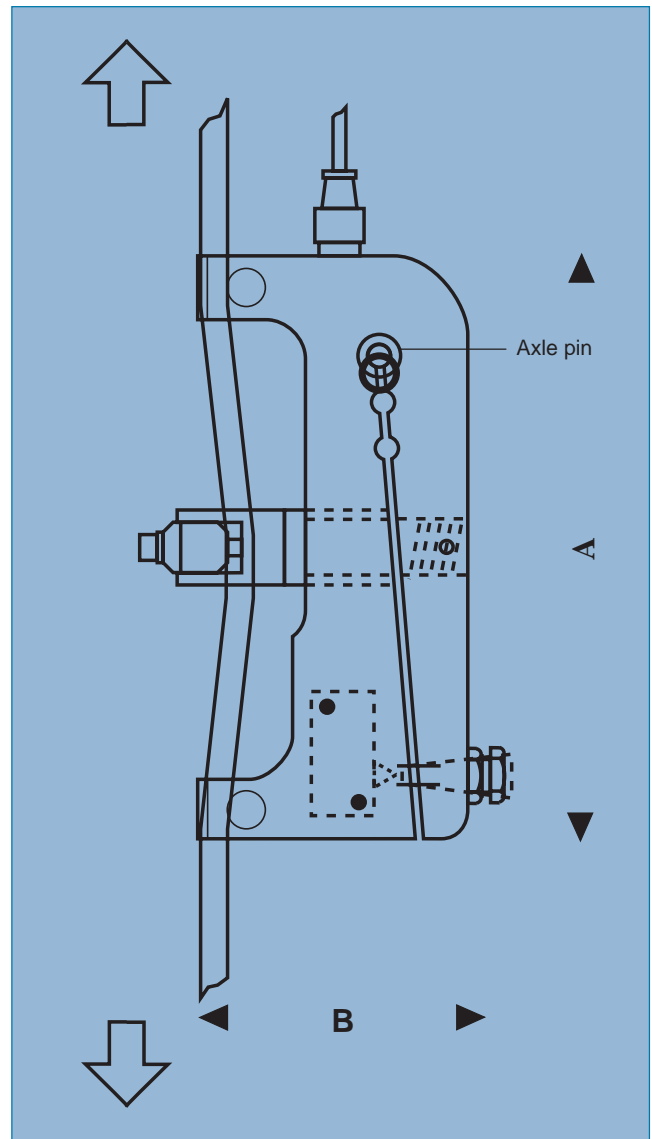


Fig.1 - HF 32 "universal" load cell -  
Operating principle

Modèle	Code	Dia. of w. rope mm daN	Max. capacity mm	A mm	B mm	Thick-ness
HF 32/1/A	0420600	5 to 16	250 à 3000	150	70	40
HF 32/2/A	0420601	17 to 26	300 à 6000	200	98	50
HF 32/3/A	0420602	27 to 36	1000 à 12000	280	138	60

There is a version B, HF 32.

HF 32/1/A also available in version B. The technical specification of version A and B are similar except the microswitch which is more sensitive with a 1 µ Hysteresis and whose breaking capacity is 25 mA for version B

### Technical specification:

max. capacity HF 32/1/A: 3000 daN on a single fall  
 HF 32/2/A: 6000 daN on a single fall  
 HF 32/3/A: 12000 daN on a single fall

Adjustment: by screw  
 Measuring cell: Switch  
 Trip point power: 4A/220 Vac  
 0,5A/220 Vdc

Repeatability of cut out: +/- 5%  
 Temperature range: From -30°C to +80°C

Connections: By plug  
 (3m lead supplied)

Material: Anodised, aeronautical grade aluminium

Protection class: IP55

### TRACTEL S.A.

29, rue du progrès  
 F-93108 Montreuil Cedex  
 Tél. (01) 48 58 91 32  
 Fax (01) 48 58 19 95

Distributed by:

**Hoosier Crane Service Company**  
**phone: 1-(800)509-6131**  
**email: sales@hoosiercrane.com**

### SECALT S.A.

3, rue du Fort Dumoulin  
 B.P. 1113 • L-1011 Luxembourg  
 Tél. (352) 43 42 42-1  
 Fax (352) 43 42 42-200